

~~~~~GATHER TOP EDGE TO MATCH MEASURE OF SKIRT EDGE ON BUST FACING UP

BJD  
WATERFALL GOWN  
SKIRT FRONT-A  
CUT 1 ON FOLD

© Melissa Adkinson 2023  
Courtesy of:  
**missysimaginings.com**



↓ CUT WITH CENTER FRONT ON FOLD ↓

BEFORE CUTTING FABRIC  
↓ CONNECT TO GOWN SKIRT FRONT-A ↓

/// OVERLAP TO CONNECT TO SKIRT FRONT-B BEFORE CUTTING FABRIC

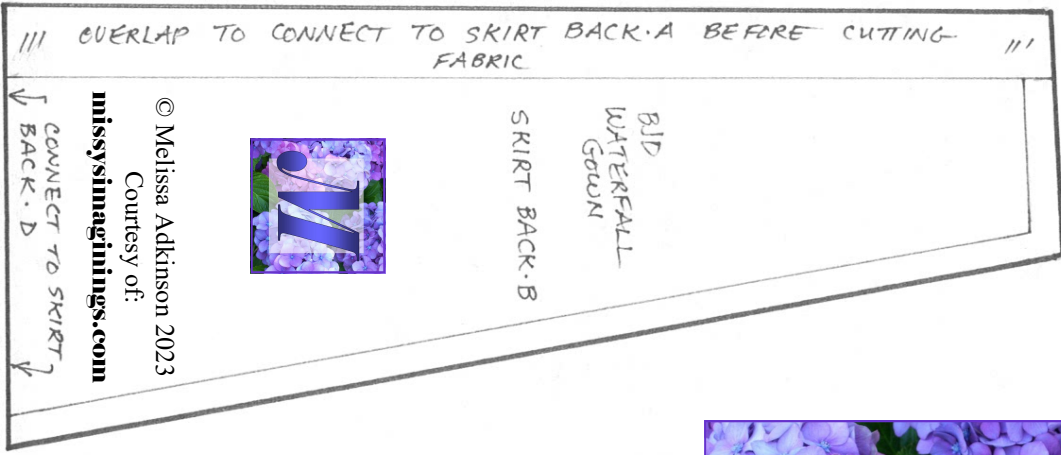
BJD  
WATERFALL GOWN  
SKIRT FRONT-D

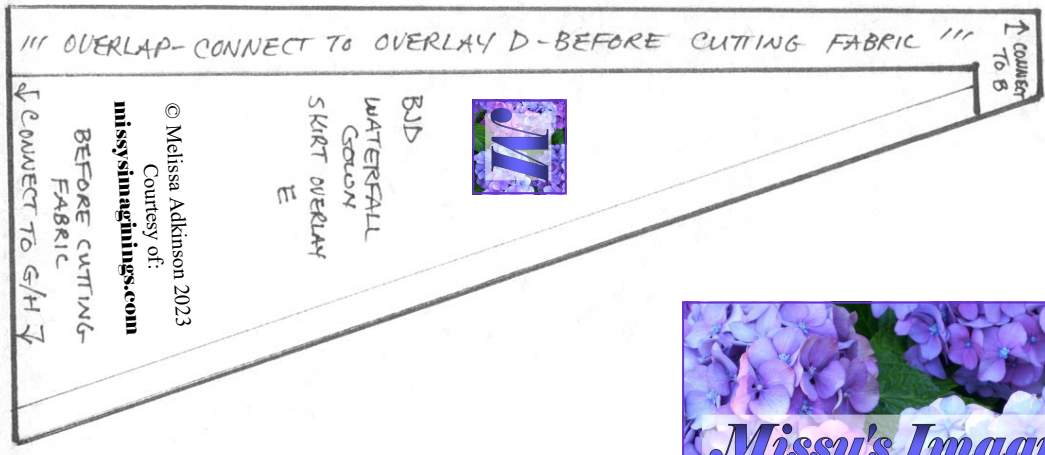
© Melissa Adkinson 2023  
Courtesy of:  
**missysimaginings.com**



↓ CENTER FRONT ON FOLD ↓

BEFORE CUTTING FABRIC  
↓ CONNECT TO GOWN SKIRT FRONT-E ↓





© Melissa Adkinson 2023  
 Courtesy of:  
**missysimaginings.com**  
 BEFORE CUTTING  
 FABRIC  
 ↓ CONNECT TO G/H ↓

BJD  
 WATERFALL  
 GOWN  
 SKIRT OVERLAY  
 E



↓ connect  
 to B

CENTER BACK

BJD  
 WATERFALL GOWN  
 SKIRT BACK · A

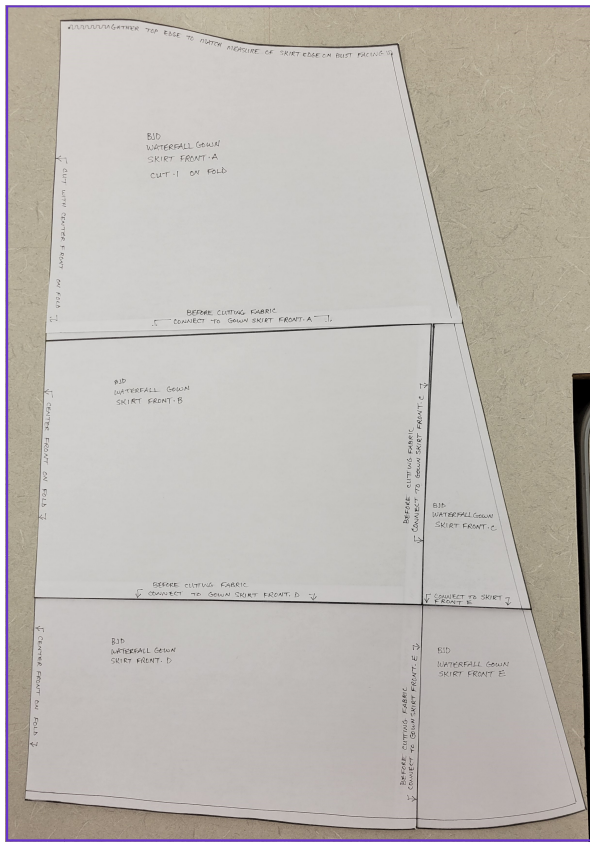
CUT · 2 OF SKIRT FABRIC  
 CUT · 2 OF OVERLAY FABRIC



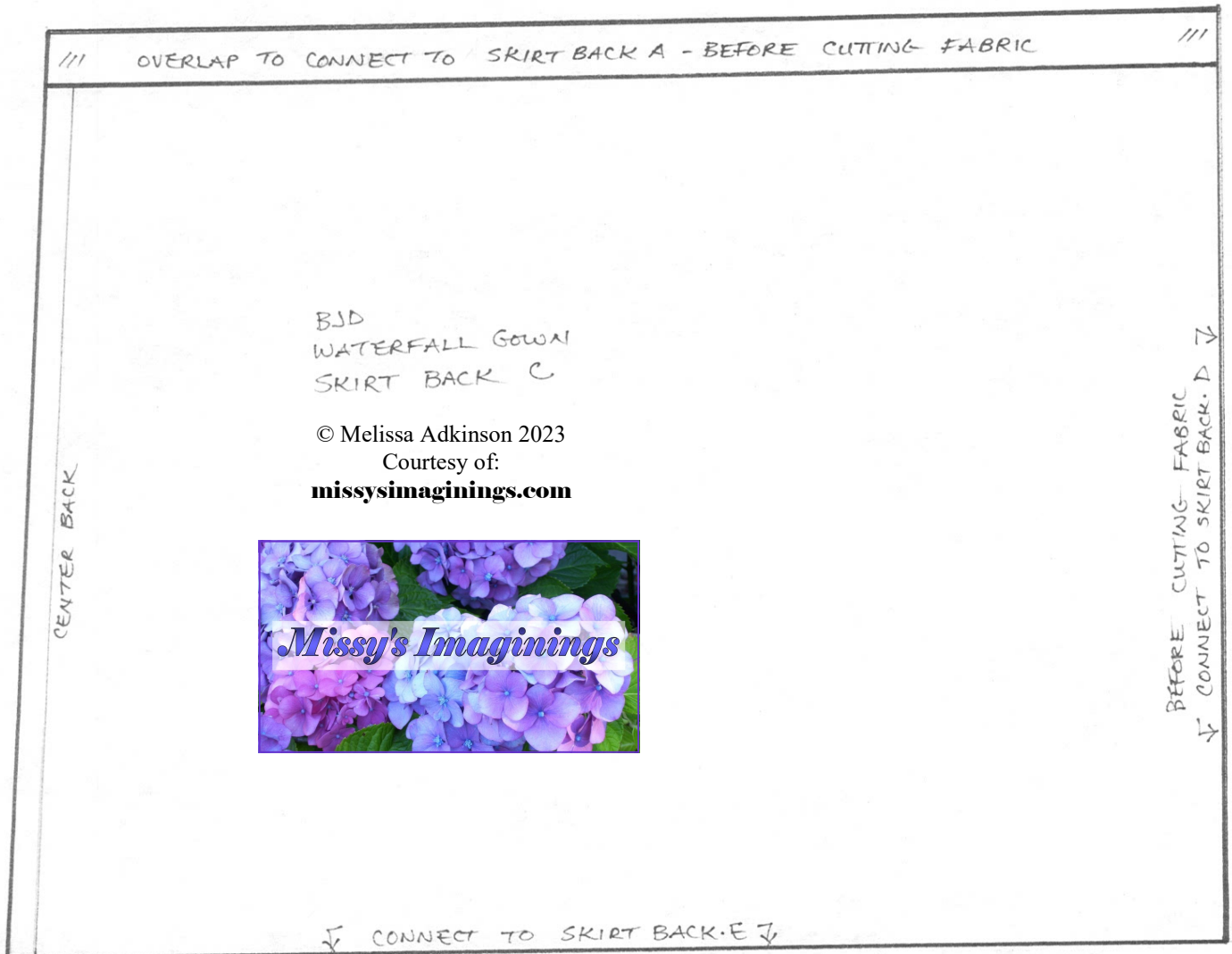
© Melissa Adkinson 2023  
 Courtesy of:  
**missysimaginings.com**

BEFORE CUTTING FABRIC  
 ↓ CONNECT TO SKIRT BACK · B ↓

BEFORE CUTTING FABRIC  
 ↓ CONNECT TO SKIRT BACK · C ↓



Before cutting any fabric or facings, use tape or stick glue to assemble all pattern pieces of the Waterfall Gown Skirt Front as shown.



/// OVERLAP TO CONNECT TO SKIRT BACK.C BEFORE CUTTING FABRIC ///

CENTER BACK

BJD  
WATERFALL GOWN  
SKIRT BACK.E

© Melissa Adkinson 2023  
Courtesy of:  
**missysimaginings.com**



BEFORE CUTTING FABRIC  
CONNECT TO SKIRT BACK.F ↓

/// OVERLAP-CONNECT TO SKIRT BACK.B ↑

OVERLAP - CONNECT TO SKIRT BACK.C ↓

BJD  
WATERFALL GOWN  
SKIRT BACK.D

© Melissa Adkinson 2023  
Courtesy of:  
**missysimaginings.com**



BEFORE CUTTING FABRIC  
CONNECT TO SKIRT BACK.F ↓

/// OVERLAP- CONNECT TO SKIRT BACK.E ↑

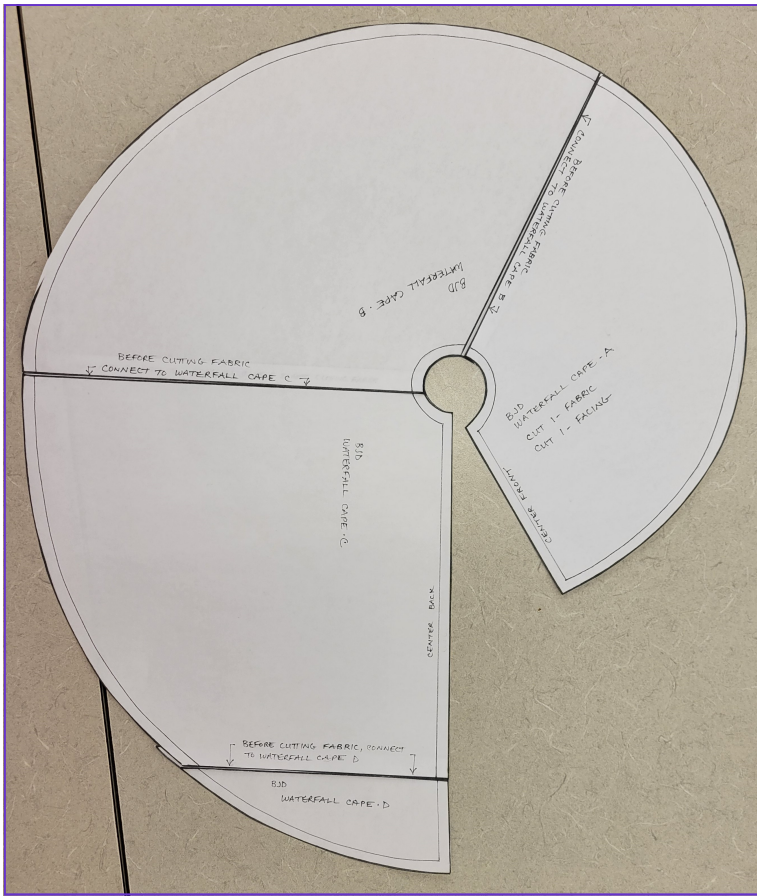
OVERLAP - CONNECT TO SKIRTBACK.D ↓

BJD  
WATERFALL GOWN  
SKIRT BACK.F

© Melissa Adkinson 2023  
Courtesy of:  
**missysimaginings.com**







Before cutting any fabric or facings, use tape or stick glue to assemble all pattern pieces of the Waterfall Cape as shown.

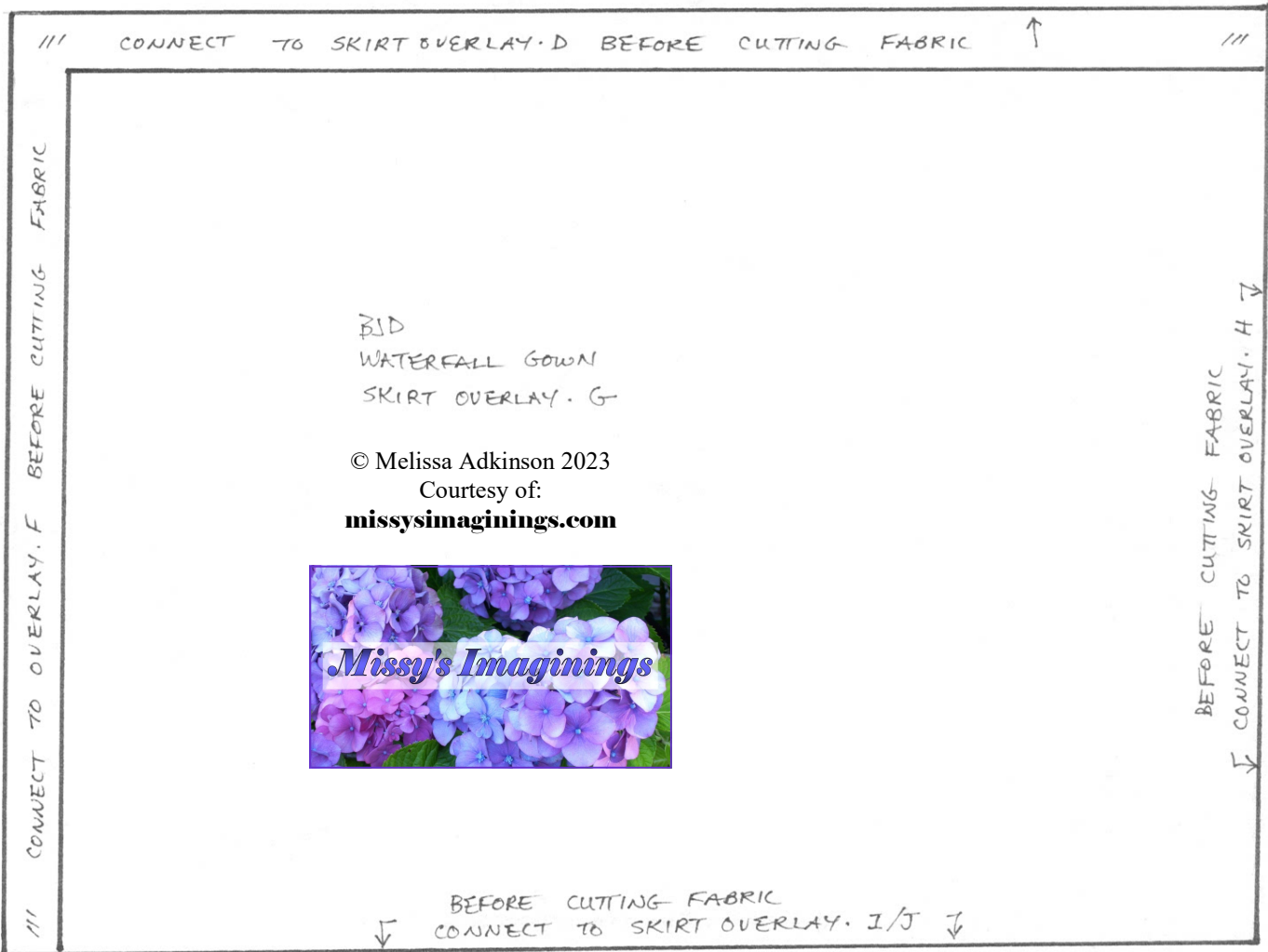
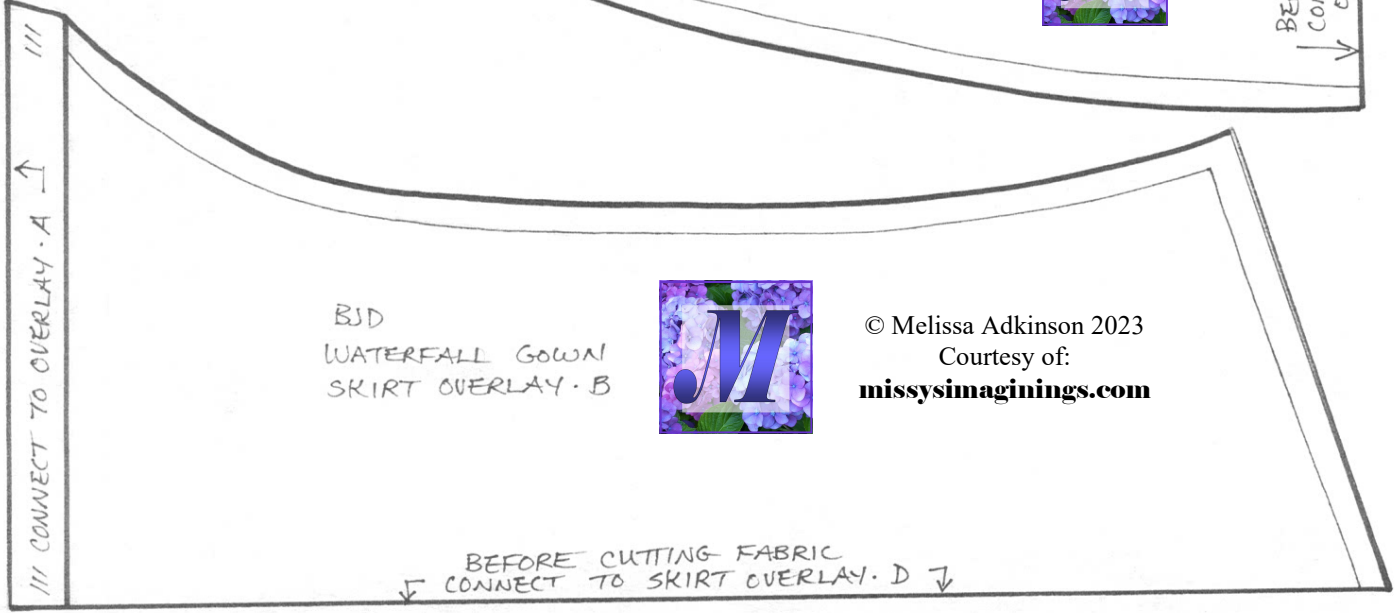
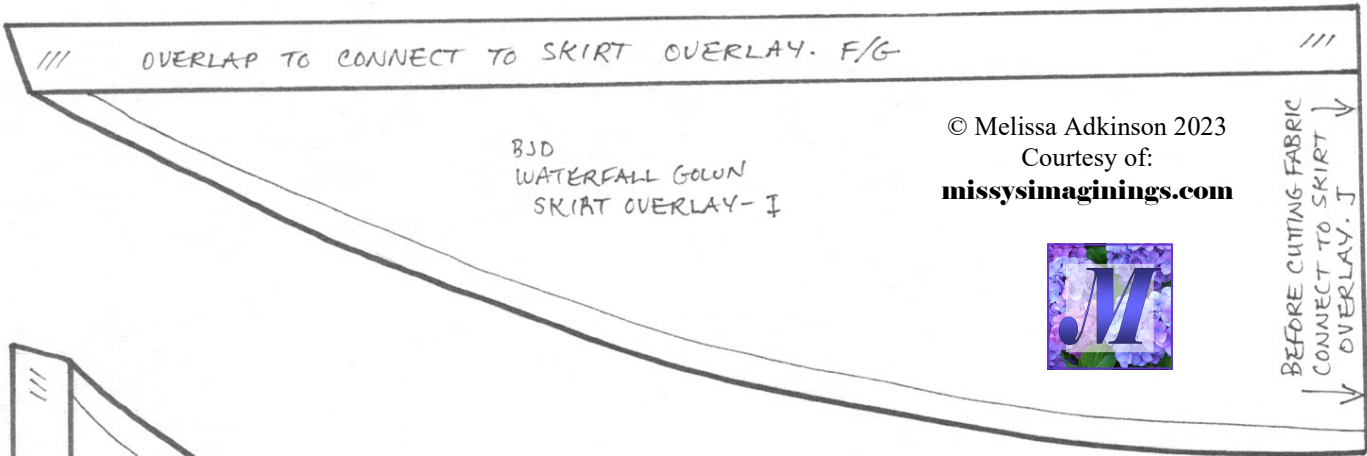
BJD  
 WATERFALL GOWN  
 SKIRT OVERLAY - A  
 CUT - 2 OF FABRIC OR LACE  
 CUT - 2 OF FACING (IF NOT USING LACE)

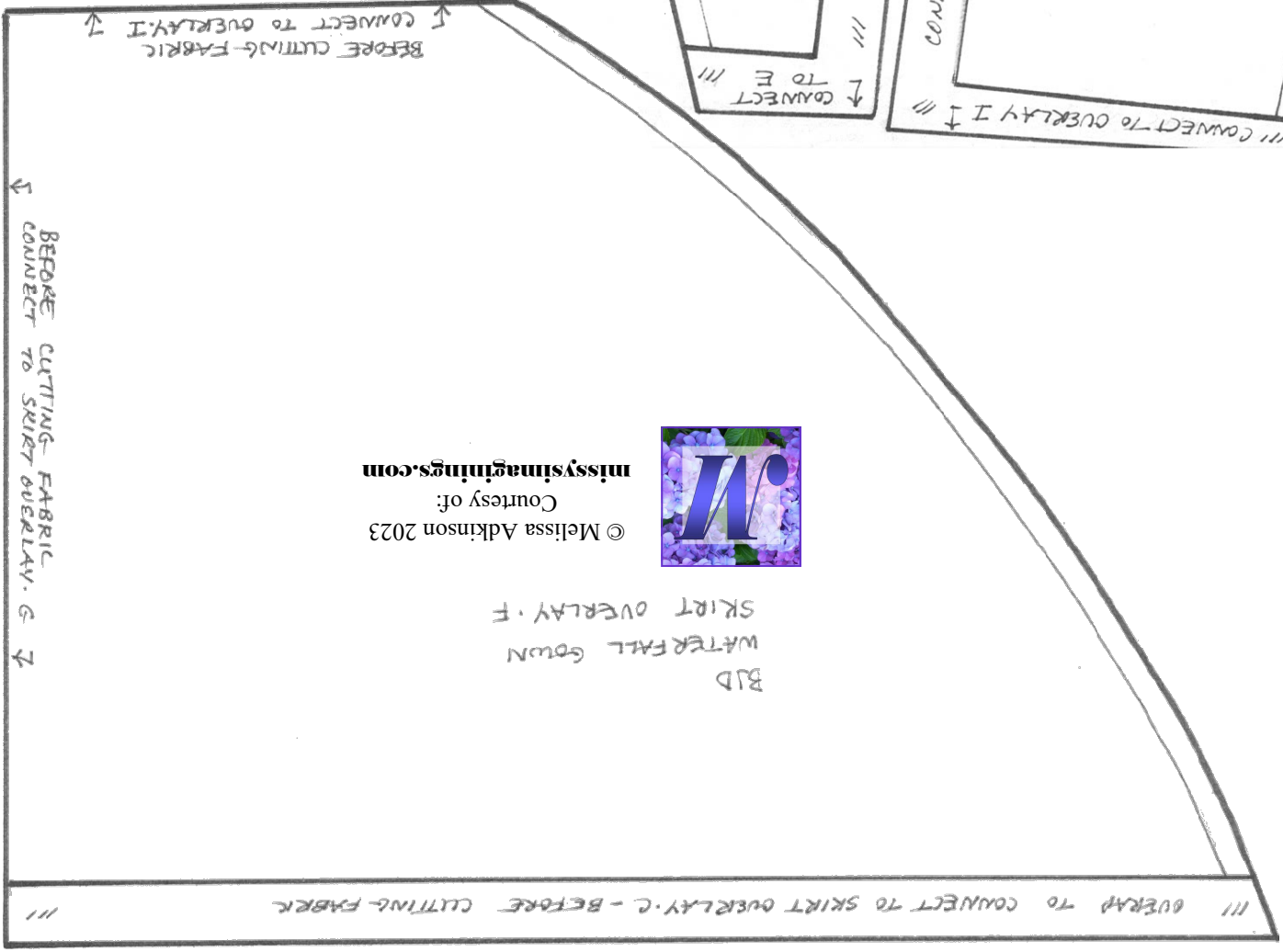
© Melissa Adkinson 2023  
 Courtesy of:  
**missysimaginings.com**



BEFORE CUTTING FABRIC  
 ↓ CONNECT TO OVERLAY - C ↓

BEFORE CUTTING FABRIC  
 ↓ CONNECT TO SKIRT OVERLAY - C ↓

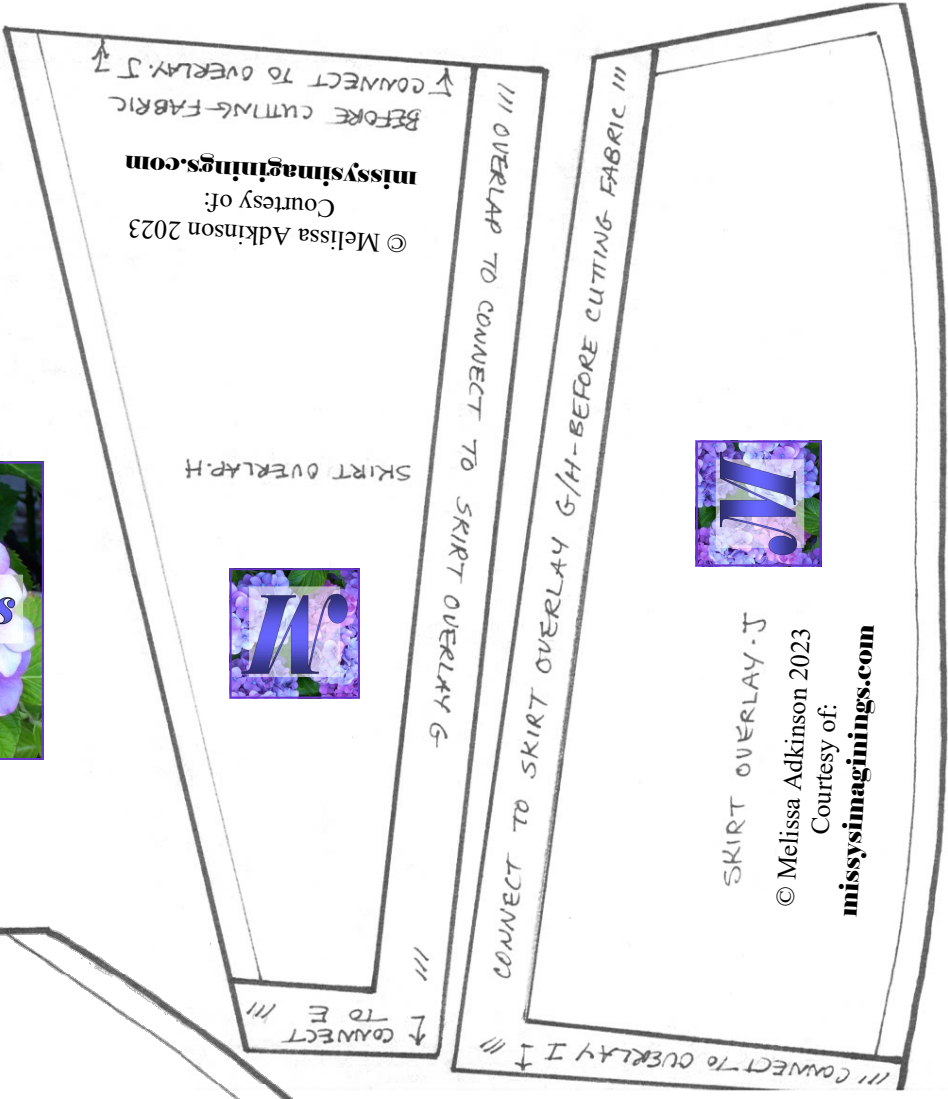




© Melissa Adkinson 2023  
Courtesy of:  
missyimaginings.com



B/D  
WATERFALL GOWN  
SKIRT OVERLAY . F



SKIRT OVERLAY . J  
© Melissa Adkinson 2023  
Courtesy of:  
missyimaginings.com



SKIRT OVERLAY . H

© Melissa Adkinson 2023  
Courtesy of:  
missyimaginings.com  
BEFORE CUTTING FABRIC  
CONNECT TO OVERLAY . J

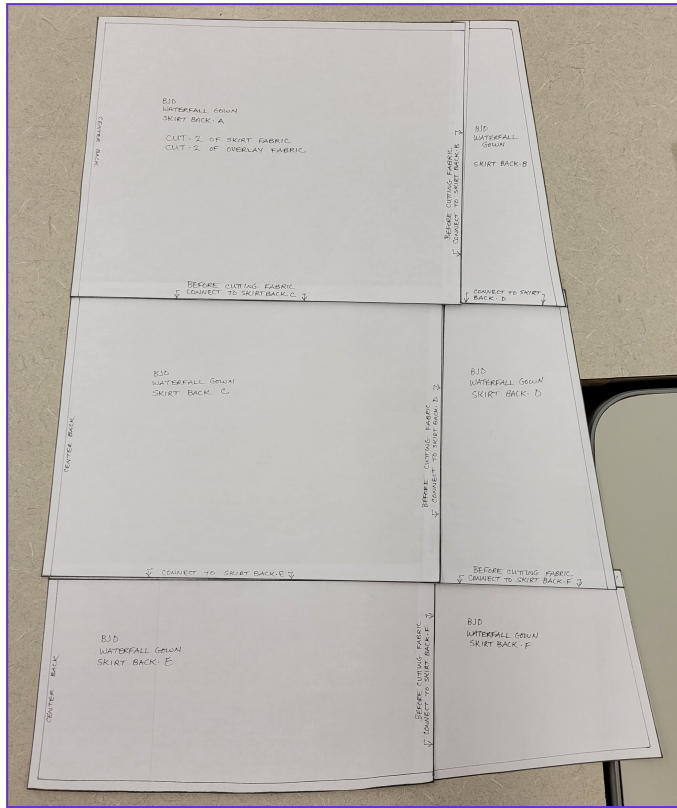
OVERLAP TO CONNECT TO SKIRT OVERLAY G

CONNECT TO SKIRT OVERLAY G/H - BEFORE CUTTING FABRIC

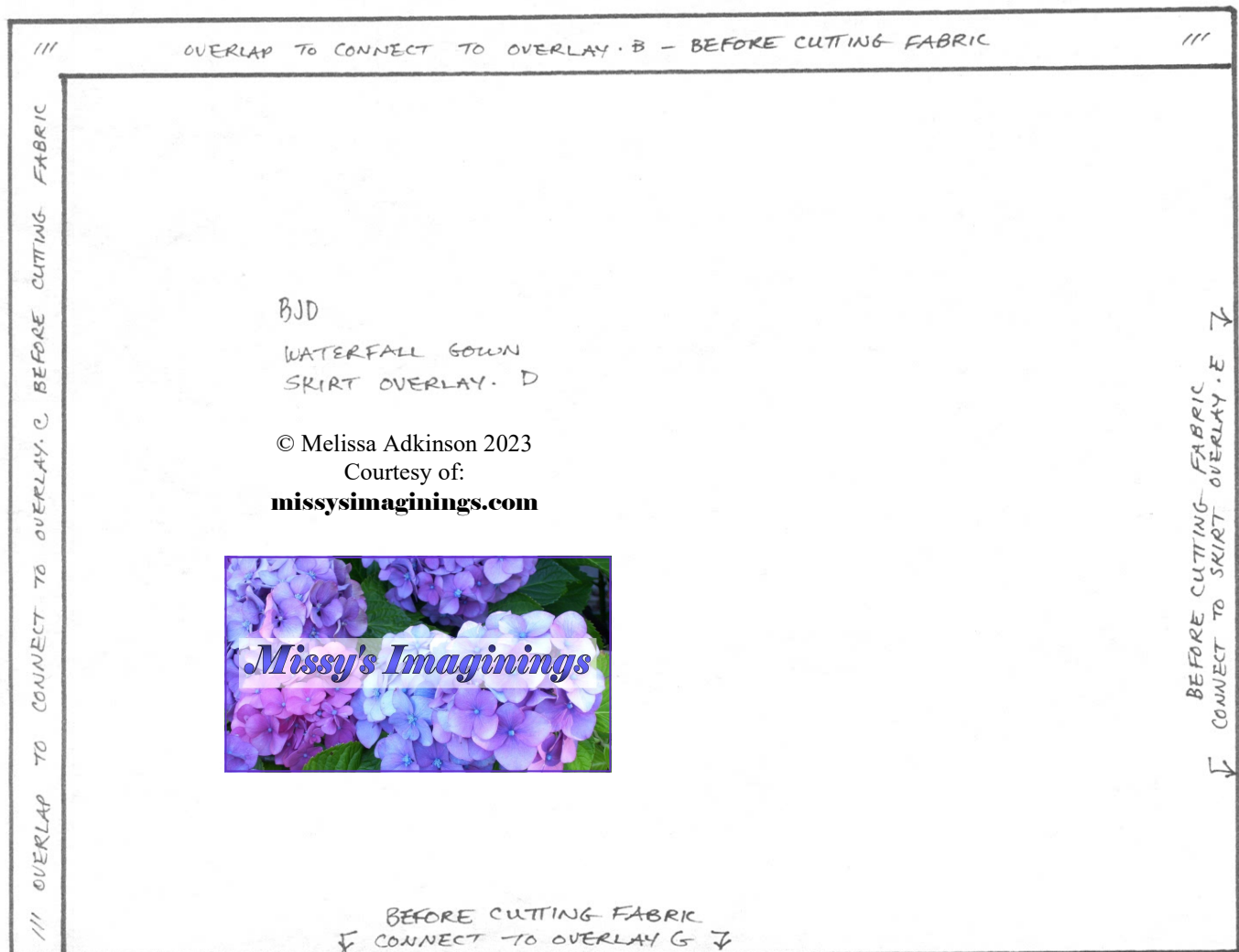
TO E

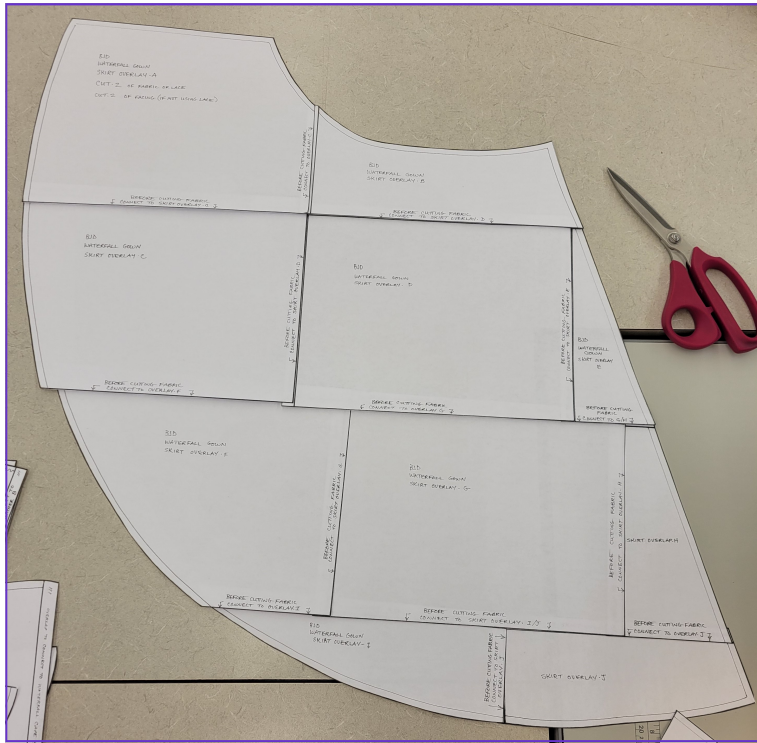
CONNECT TO OVERLAY I

OVERLAP TO CONNECT TO SKIRT OVERLAY . C - BEFORE CUTTING FABRIC

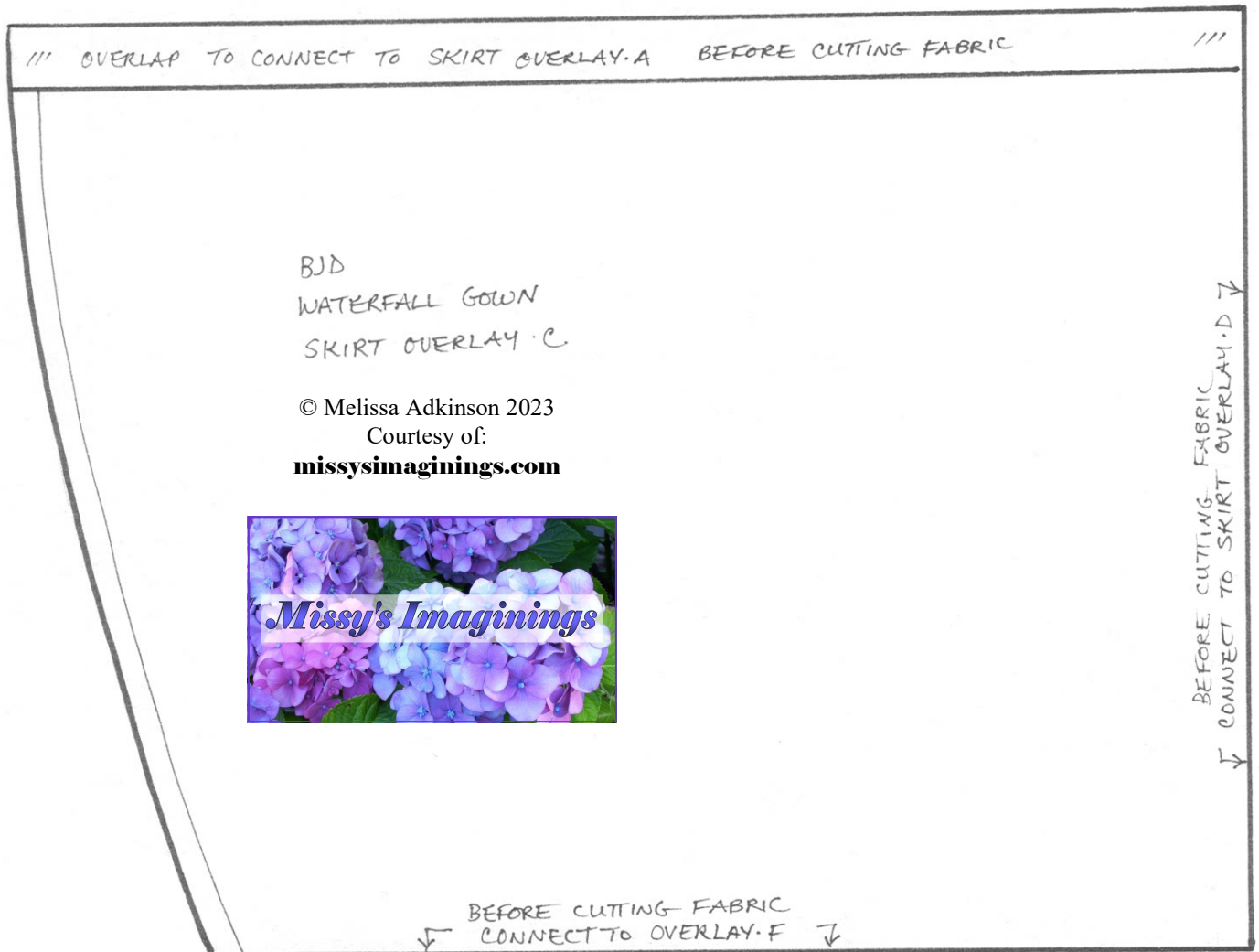


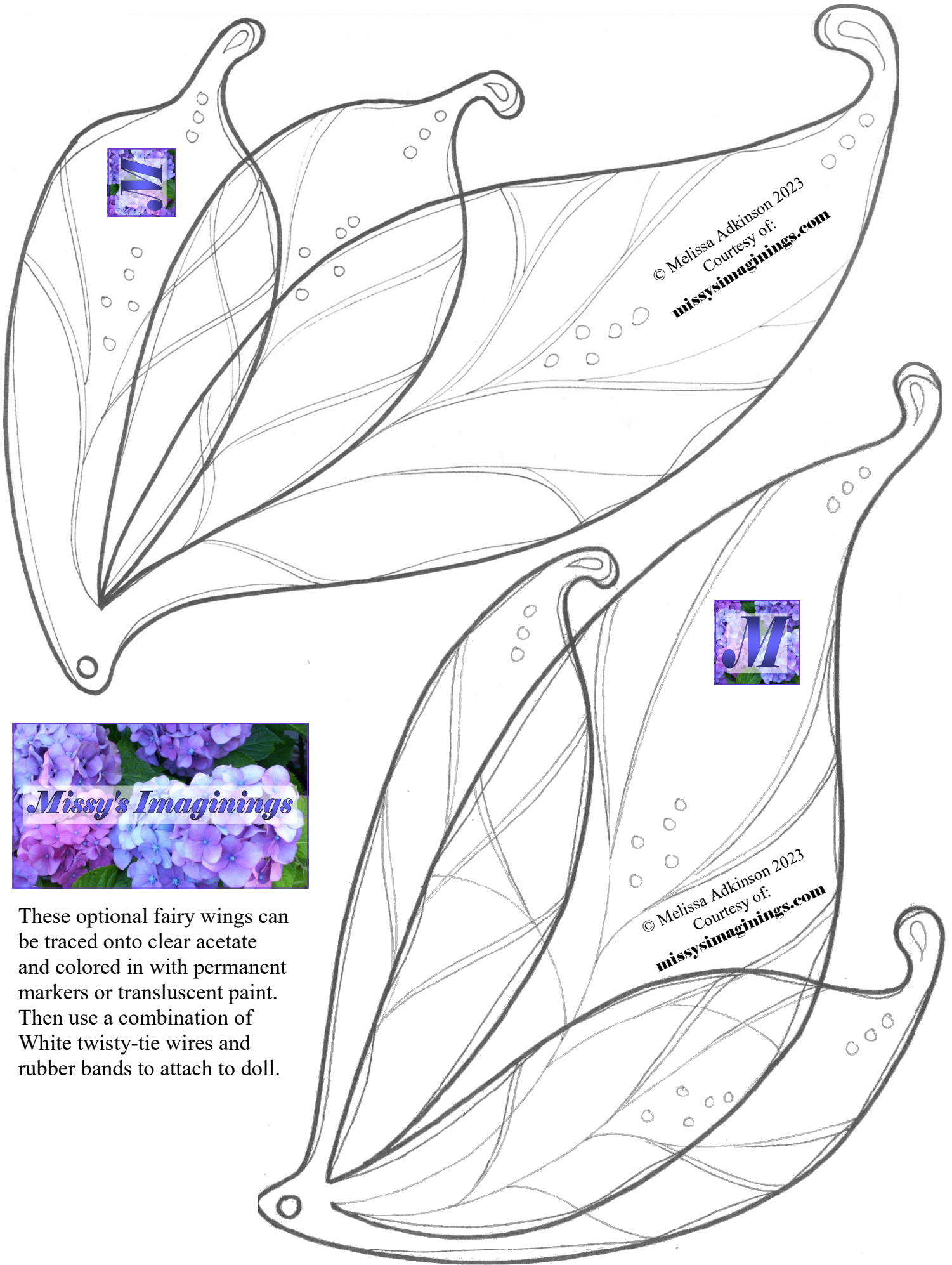
Before cutting any fabric or facings, use tape or stick glue to assemble all pattern pieces of the Waterfall Gown Skirt Back as shown.





Before cutting any fabric or facings, use tape or stick glue to assemble all pattern pieces of the Waterfall Gown Skirt Overlay as shown.





© Melissa Adkinson 2023  
Courtesy of:  
[missysimaginings.com](http://missysimaginings.com)

© Melissa Adkinson 2023  
Courtesy of:  
[missysimaginings.com](http://missysimaginings.com)



These optional fairy wings can be traced onto clear acetate and colored in with permanent markers or translucent paint. Then use a combination of White twisty-tie wires and rubber bands to attach to doll.