

RAINBOW  
SHADOW  
HIGH GIRL  
GOWN  
SIDE  
CUT. 2

© Melissa Adkinson 2023  
Courtesy of:  
[missysimaginations.com](http://missysimaginations.com)

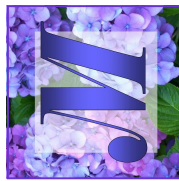


RAINBOW  
SHADOW  
HIGH GIRL  
GOWN  
FRONT  
CUT. 1  
CENTER FRONT

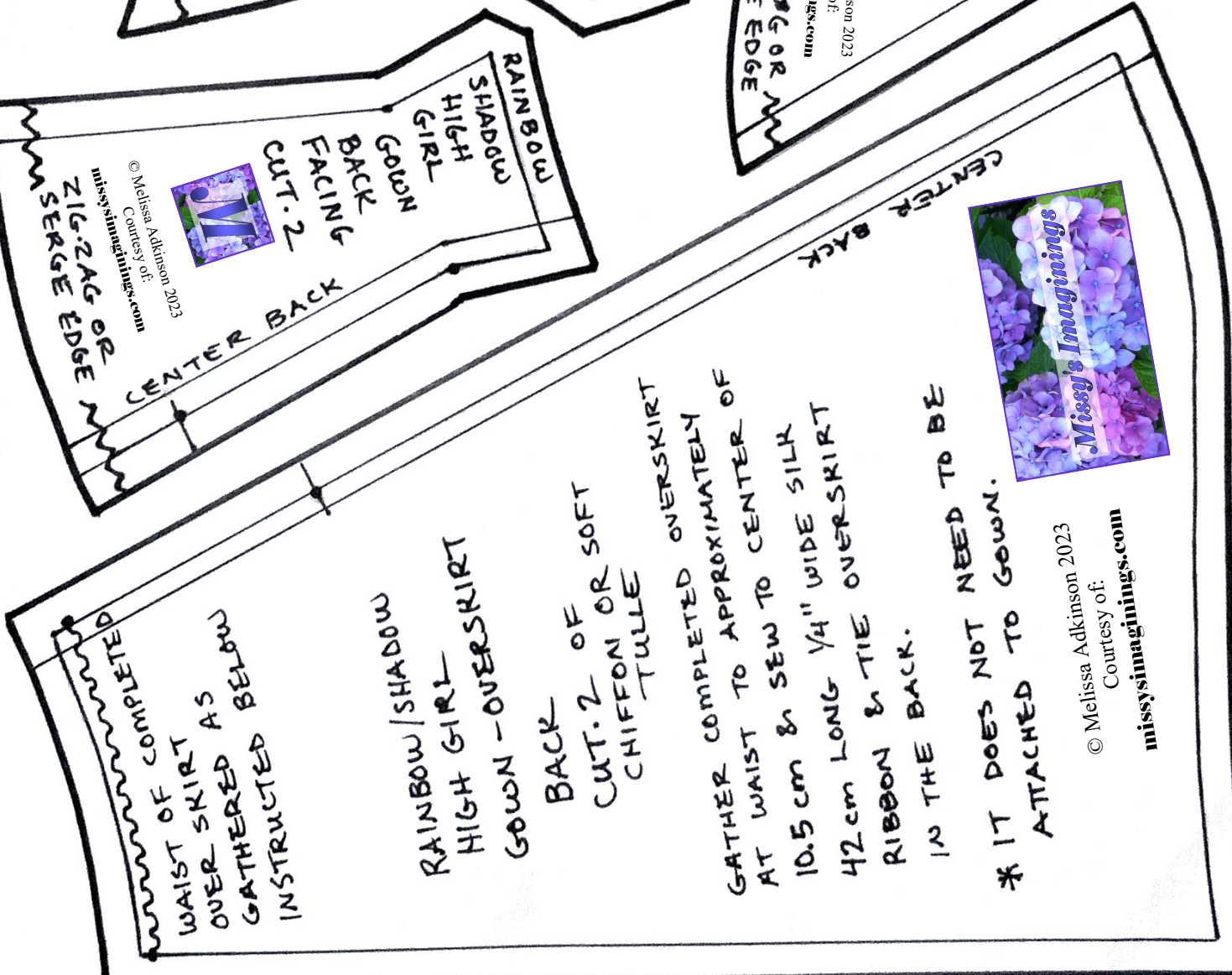
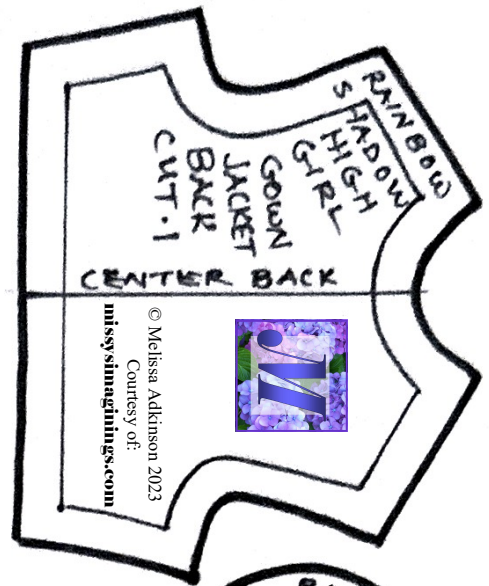
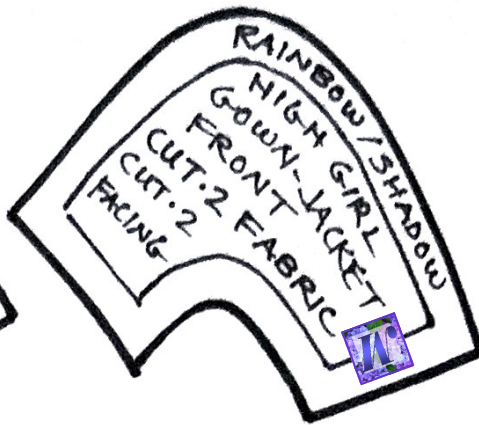
© Melissa Adkinson 2023  
Courtesy of:  
[missysimaginations.com](http://missysimaginations.com)

CENTER BACK

RAINBOW  
SHADOW  
HIGH GIRL  
GOWN  
BACK  
CUT. 2



© Melissa Adkinson 2023  
Courtesy of:  
[missysimaginations.com](http://missysimaginations.com)



WAST OF COMPLETED OVER SKIRT AS GATHERED BELOW INSTRUCTED

RAINBOW SHADOW HIGH GIRL GOWN - OVERSKIRT

BACK OF SOFT CUT: 2 OR CHIFFON OR TULLE

GATHER COMPLETED OVERSKIRT AT WAIST TO APPROXIMATELY 10.5 cm & SEW TO CENTER OF 42 cm LONG 1/4" WIDE SILK RIBBON & TIE OVERSKIRT IN THE BACK.

\* IT DOES NOT NEED TO BE ATTACHED TO GOWN.

© Melissa Adkinson 2023  
 Courtesy of:  
 missysimaginings.com



© Melissa Adkinson 2023  
Courtesy of:  
[missysimaginations.com](http://missysimaginations.com)

RAINBOW SHADOW  
HIGH GIRL  
GOWN  
OVERSKIRT  
SIDE  
CUT .2 OF  
CHIFFON OR SOFT  
TULLE

CENTER FRONT

RAINBOW  
SHADOW  
HIGH GIRL  
GOWN  
OVERSKIRT  
FRONT  
CUT .1 OF  
CHIFFON OR  
SOFT TULLE

© Melissa Adkinson 2023  
Courtesy of:  
[missysimaginations.com](http://missysimaginations.com)



