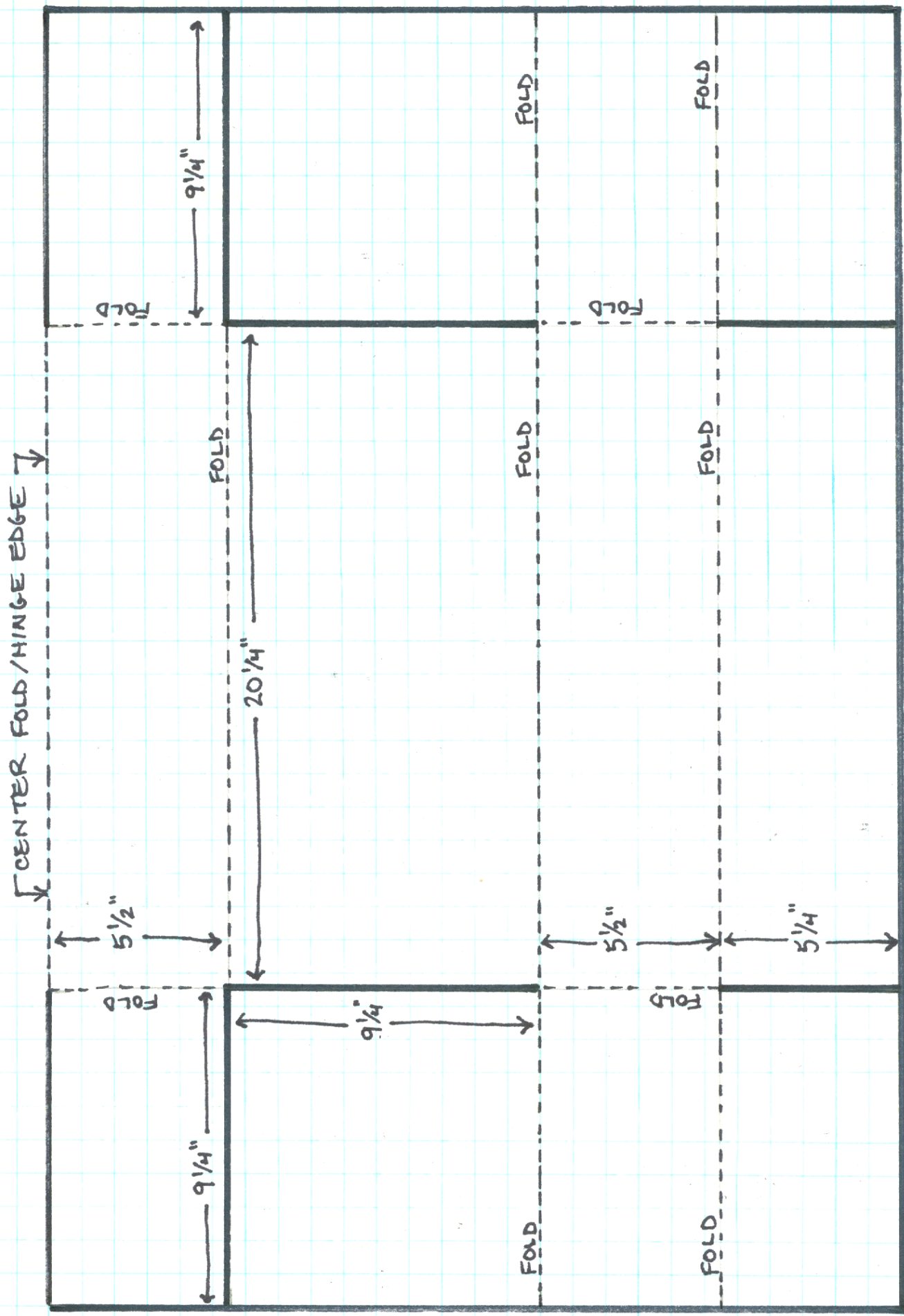


← TOTAL CASE WIDTH IS 51" →



9" x 20" x 10"
DOLL CASE

LAYOUT FOR FOLD & CUT DESIGN

CUT ON SOLID LINES & FOLD ON DOTTED LINES.

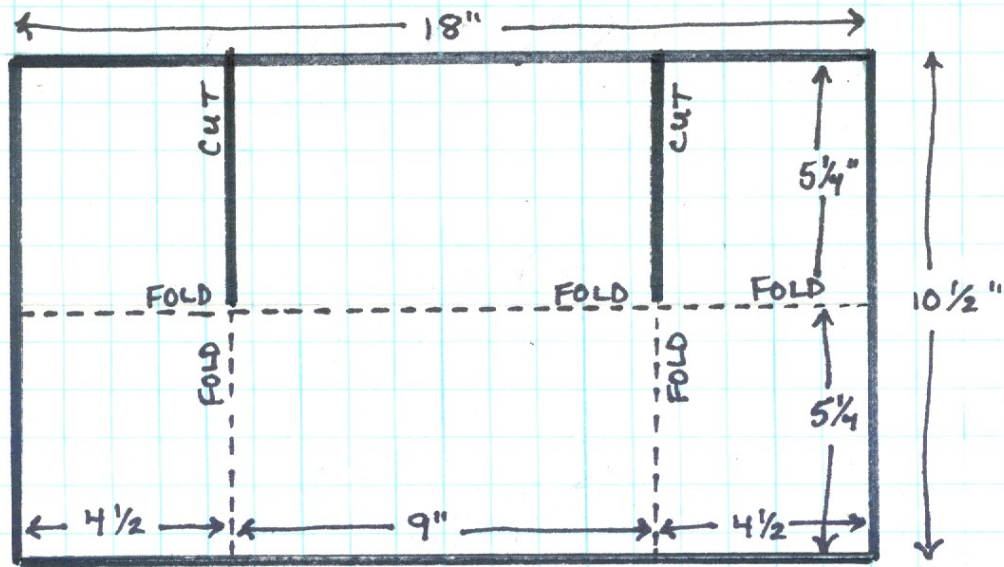
* THIS DIAGRAM SHOWS ONE SIDE OF THE DOLL CASE.

MIRROR THIS LAYOUT ONTO THE OPPOSITE SIDE AT THE "CENTER FOLD" EDGE.

CASE HEIGHT TOTAL IS 38 3/4"

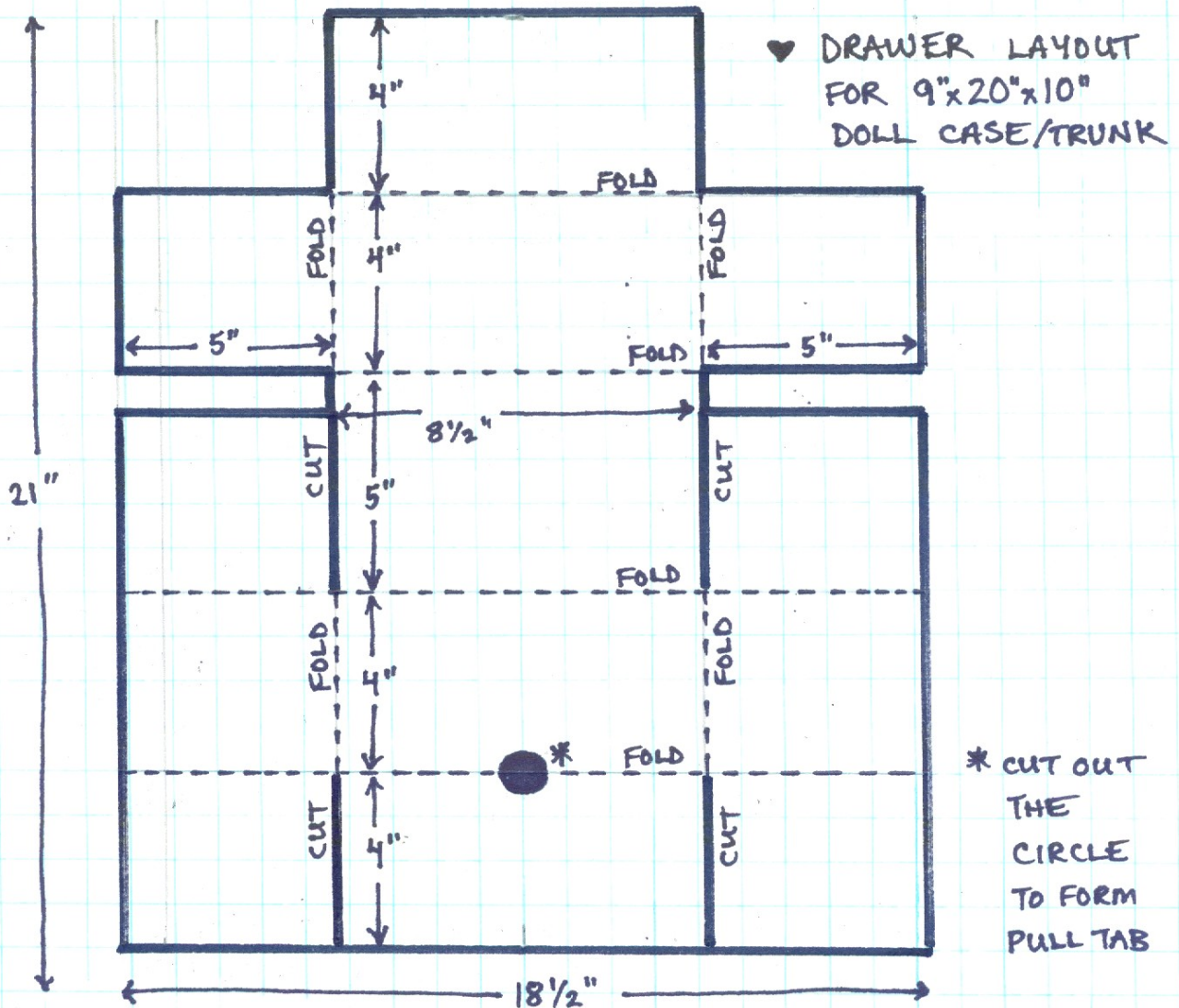
25 1/2" EACH SIDE

CUT ON
SOLID
LINES &
FOLD ON
DOTTED
LINES.



♥ SHELF FOR DRAWER TO FIT IN CASE.

NOTE: IT HELPS FIT PIECES INTO PLACE IF YOU SCORE LINES BEFORE FOLDING, AND MAKE "CUTS" SO THEY ARE ABOUT 1/8" WIDE RATHER THAN A SIMPLE CUT LINE. IT ALSO HELPS TO GLUE FLAPS INTO PLACE ONCE FOLDED & LAY INTO POSITION.



♥ DRAWER LAYOUT
FOR 9"x20"x10"
DOLL CASE/TRUNK

* CUT OUT
THE
CIRCLE
TO FORM
PULL TAB